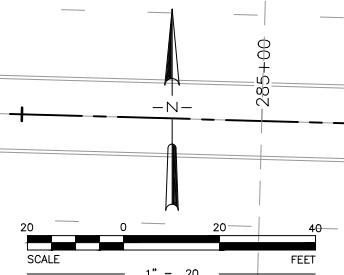
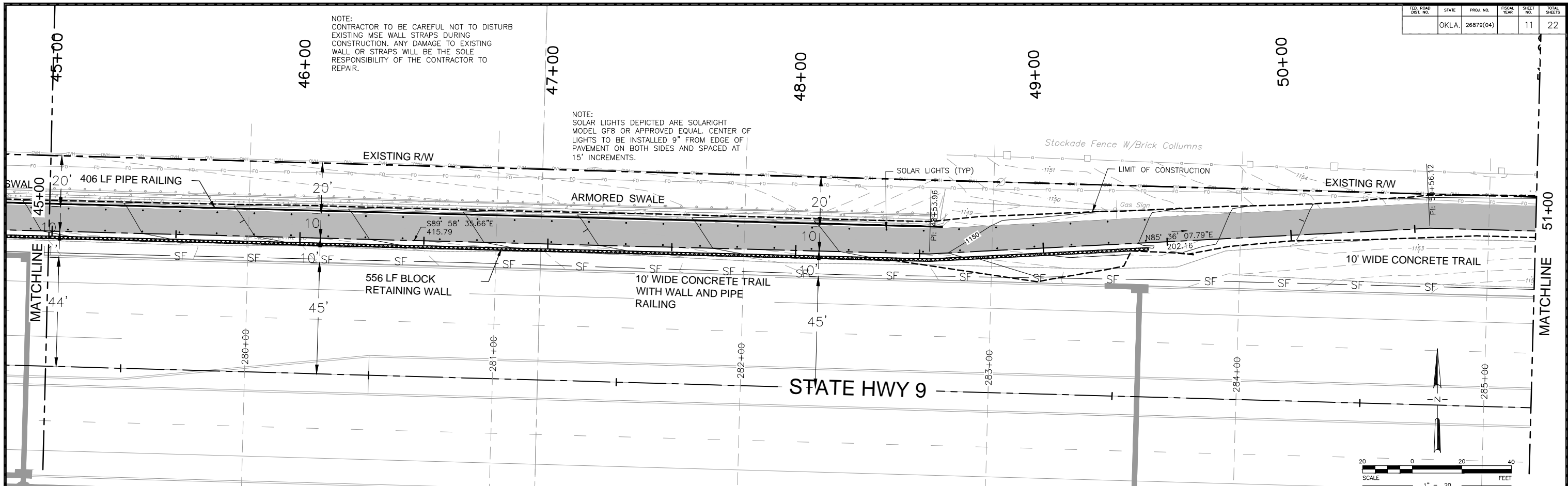


NOTE:  
CONTRACTOR TO BE CAREFUL NOT TO DISTURB EXISTING MSE WALL STRAPS DURING CONSTRUCTION. ANY DAMAGE TO EXISTING WALL OR STRAPS WILL BE THE SOLE RESPONSIBILITY OF THE CONTRACTOR TO REPAIR.

NOTE:  
SOLAR LIGHTS DEPICTED ARE SOLARIGHT MODEL GF8 OR APPROVED EQUAL. CENTER OF LIGHTS TO BE INSTALLED 9" FROM EDGE OF PAVEMENT ON BOTH SIDES AND SPACED AT 15' INCREMENTS.



SOUTH EDGE OF SIDEWALK  
Horizontal Scale: 1" = 20'  
Vertical Scale: 1" = 4'  
Vertical Exaggeration: x 5

